

GE Healthcare

Hand in hand for a healthier world

LOGIQ V1

Veterinary Ultrasound



Portable, practical and ready for your diagnostic challenges.

Now you can add the advanced capabilities of the compact LOGIQ™ V1 ultrasound system to help your patients.



Easy to use imaging in a portable ultrasound system

The compact LOGIQ V1 includes many advanced imaging technologies from decades of GE experience, including:

- **Coded Harmonic Imaging** enables high resolution even at deep penetration.
- **Real Time Speckle Reduction Imaging (SRI-HD)** reduces noise while enhancing true tissue detail.
- **CrossXBeam™** enhances your ability to visualize tissue interfaces and differentiate borders.

A system as versatile as your practice

The versatile LOGIQ V1 system accommodates a wide range of exams, including small & large animal abdominal, equine fertility, small parts, MSK including equine tendon.

Push just a few buttons, enhance exam efficiency

With the LOGIQ V1, you get fast, accurate information with few keystrokes. For example:

- **Customised Presets**– Scanning parameters preset for your individual requirements to make each different exam easier & faster.
- **Data Storage & Transfer** - Multiple options for image storage & transfer including network storage, USB or wireless transfer.
- **Auto Optimise**- Optimizes B-Mode image to help improve contrast resolution. One button push to improve you images

Plus, you become a member of the LOGIQ Club, with online access to tools and resources to help you experience the full power of your LOGIQ ultrasound system.

The transducers you need — real easy

The LOGIQ V1 gives you a wide variety of ergonomic transducers:

- **LK-760-RS** – Dedicated Vet Transducer with long footprint & robust design for equine fertility scanning, MSK tendon imaging & small parts.
- **8C-RS** – Microconvex Transducer with small footprint for imaging pelvis, abdomen, cardiac or small parts.
- **12L-RS** – High Frequency Linear Transducer for MSK, small parts, abdomen & gut imaging.

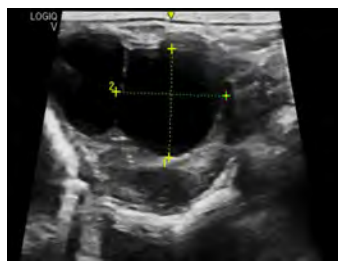


Reliability that drives productivity

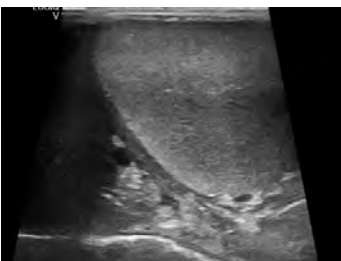
With thousands of LOGIQ systems installed worldwide, the robust LOGIQ V1 is backed by strong GE service and support.



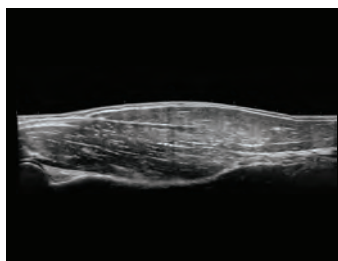
Liver



Equine Ovary + Follicles



Equine Testes



Muscle using LOGIQView

With its compact design – yet large LCD display – and standard battery back-up, the LOGIQ V1 fits into small spaces and easily maneuvers where you need it.





About GE Healthcare

GE Healthcare provides transformational medical technologies and services to meet the demand for increased access, enhanced quality and more affordable healthcare around the world. GE (NYSE: GE) works on things that matter - great people and technologies taking on tough challenges. From medical imaging, software & IT, patient monitoring and diagnostics to drug discovery, biopharmaceutical manufacturing technologies and performance improvement solutions, GE Healthcare helps medical professionals deliver great healthcare to their patients.

GE Healthcare
9900 innovation Drive
Wauwatosa, WI 53226
U.S.A.

www.gehealthcare.com

Imagination at work

Data subject to change

© 2015 General Electric Company. September 2015/JB56086AU

GE, the GE Monogram, imagination at work, LOGIQ and CrossXBeam are trademarks of General Electric Company.

¹Based on internal study done with third-party consultants on LOGIQ E9, and software V&V documents.

Reproduction in any form is forbidden without prior written permission from GE. Nothing in this material should be used to diagnose or treat any disease or condition. Readers must consult a healthcare professional.