

# LOGIQ\* S7

## Musculoskeletal Imaging

Sensational performance, Smart design, Specialized capabilities

### Transducers

- ML6-15<sup>l</sup> high frequency matrix array linear transducer ensures great spatial resolution and image uniformity from near to far field due to the multiple rows of crystals
- L8-18i-D high frequency hockey stick transducer designed for limited access and small joints
- 11L-D high frequency linear transducer for superficial imaging
- 9L-D low frequency transducer for imaging deeper structures such as adult hips and posterior labrum

### Features

A variety of features ensure sensational performance across the entire range of Musculoskeletal imaging and allow early diagnosis.

- Virtual convex increases the field of view to visualize wider anatomy in a single scan and increasing contrast resolution when combined with Speckle Reduction Imaging (SRI)
- LOGIQView allows a real-time representation of long anatomical areas (e.g. Achilles' Tendon) in combination with CrossXBeam and SRI
- Ultra high Doppler and Color frequency for slow flow sensitivity
- Clear visualization of the needle profile and confidence in injections with B-Steer + to assist with needle visualization
- B-Flow Color provides sensational "Doppler-free" flow visualization of small superficial vessels with great sensitivity, spatial and temporal resolution as well as angle independency.

### Elastography for stiffness evaluation

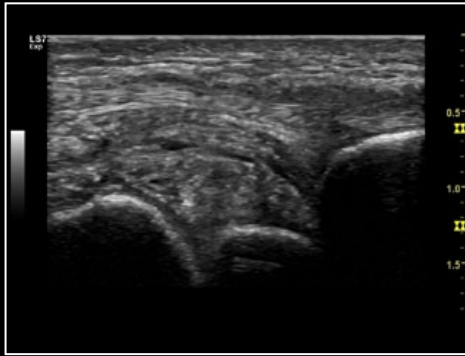
- Qualitative package with color and gray maps
- Deformation Quality bar and graph help improve user confidence
- Semi-Quantification<sup>2</sup> with E-Index and E-Ratio Q-Analysis over a multi frame acquisition
- GE Raw Data processing helps user independency

### Quantitative analysis package

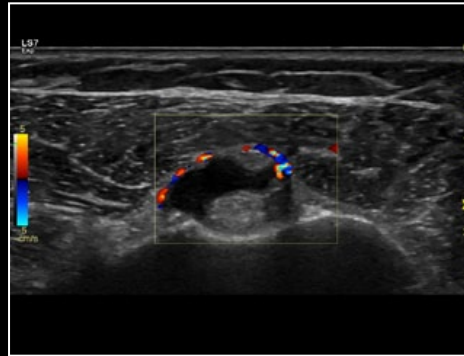
- Vascular measurements of 2D PDI and CFM in a drawn Region of Interest (ROI)
- Assessment for joint inflammation staging, treatment planning, and monitoring



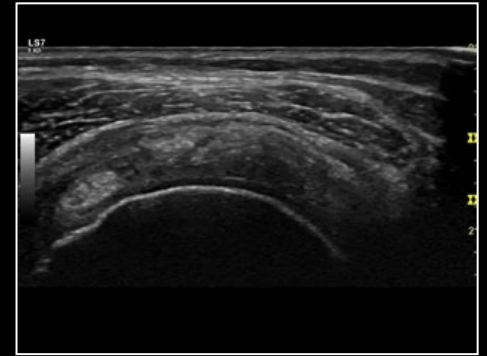
# Sensational performance, Smart design, Specialized capabilities



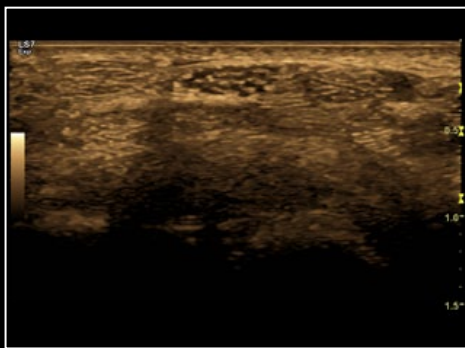
Scapho-lunate joint ganglion of the wrist using the L8-18i-D transducer.



Color Flow surrounding biceps tendon using the ML6-15 transducer.



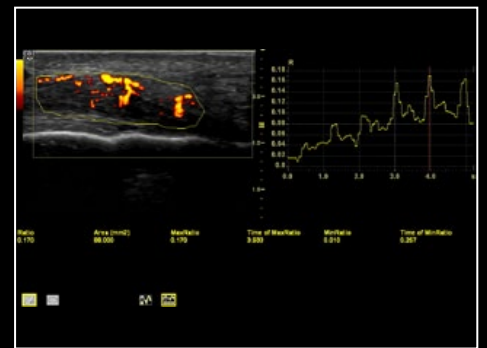
Supraspinatus tendon of the shoulder using the ML6-15 transducer.



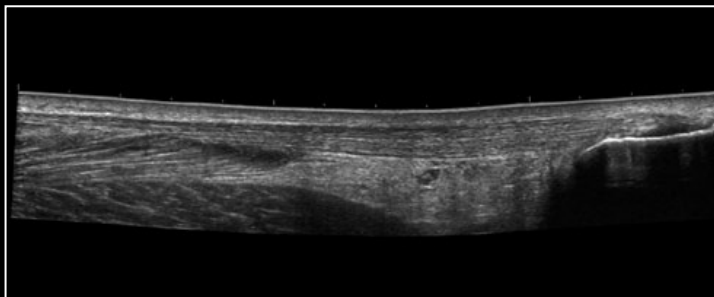
Median nerve and flexor tendons of the wrist using the L8-18i-D transducer.



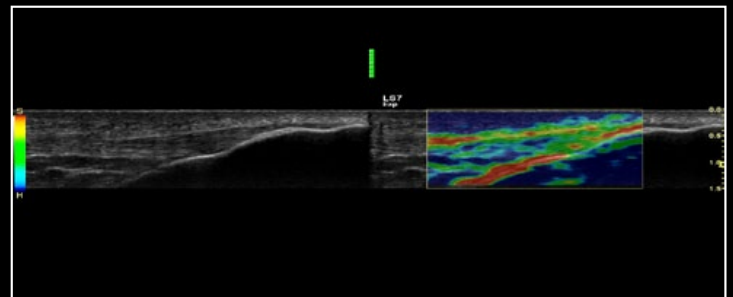
Gluteus Medius tendon of the right hip using the 9L-D transducer.



Power Doppler image with Quantification to assess response to treatment.



LOGIQView of Achilles' tendon using the 11L-D transducer.



Elastography image of the patellar tendon using the ML6-15 transducer.

<sup>1</sup>Available on the LOGIQ S7 Expert only.

<sup>2</sup>Elastography with semi-Quantification described in this material has not been cleared by the U.S. FDA and is not available for promotion or sale in the United States.

© 2012 General Electric Company – All rights reserved.

General Electric Company reserves the right to make changes in specifications and features shown herein, or discontinue the product described at any time without notice or obligation. Contact your GE Representative for the most current information.

GE and GE monogram are trademarks of General Electric Company.

GE Medical Systems Ultrasound & Primary Care Diagnostics, LLC, a General Electric company, doing business as GE Healthcare.

\*Trademark of General Electric Company.

DOC1165090