

Transducer Guide

LOGIQ* S7¹

This versatile collection of E-Series transducers helps you acquire premium images without the daily challenge of case dependency in busy departments due to the integration of GE's core technologies.



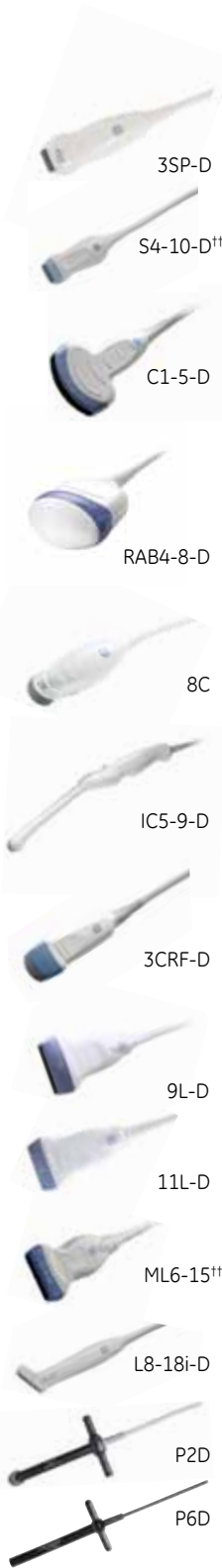
Acoustic Amplifier Technology achieves high sensitivity by recycling the unused acoustic energy that previously passed through the transducer crystal.

Single Crystal Technology uses advanced ceramic materials to increase bandwidth, offering excellent signal to noise and enhanced axial resolution and penetration.

Matrix Array Technology uses multiple rows of crystals to help achieve uniform resolution throughout the field of view.

Advanced Ergonomic Design features lightweight polymers and light, flexible cables for ease of movement. Transducers are shaped for proper grip so they fit the hand comfortably, with ridges for enhanced handling.





Description	Applications	FOV	Frequen- cy Range [†]	Biopsy Guide
Sector				
Broad-spectrum sector transducer	Cardiac, Transcranial, Abdomen	120°	1.6 – 5.5 MHz	Multi-Angle, Reusable bracket (H46222LE)
Broad-spectrum sector transducer	Pediatrics, Neonatal	90°	3.6 – 10 MHz	No
Convex				
Broad-spectrum convex transducer	Abdomen, OB/GYN, Urology	70°	1.8 – 5 MHz	Multi-Angle, disposable with a reusable bracket (H40432LE)
3D/4D				
Broad-spectrum convex volume transducer	Abdomen, OB/GYN	80°, 84° Volume	3.1 – 8 MHz	Single-Angle, disposal with reusable bracket (H48621Y), single angle reusable (H46701AE)
Micro-convex				
Broad-spectrum micro-convex transducer	Neonatal, Pediatrics	132°	3.6 – 10 MHz	No
Broad-spectrum microconvex intra-cavitary transducer	OB/GYN, Urology, Endocavity	150°	3.6 – 9 MHz	Single-Angle, disposable with a disposable bracket (E8385MJ) or reusable bracket (H40412LN)
Broad-spectrum micro-convex biopsy transducer	Abdomen, Urology, Vascular	80°	2.1 – 4.4 MHz	Single-Angle, disposable with a reusable bracket (40442LR), Multi-Angle with a reusable bracket (H40452LP)
Linear				
Broad-spectrum linear transducer	Vascular, Small parts, Pediatrics,	44 mm	3.1 – 10 MHz	Multi-Angle, disposable with a reusable bracket (H4906BK)
Broad-spectrum linear transducer	Small parts, Vascular	38 mm	4.2 – 12 MHz	Multi-Angle, disposable with a reusable bracket (H40432LC)
Broad-spectrum linear matrix array transducer	Small parts, Vascular, Neonatal, Pediatrics	50 mm	5 – 15 MHz	Multi-Angle, disposable with a reusable bracket (H40432LK)
Broad-spectrum linear transducer	Small Parts, Vascular	25 mm	5 – 18 MHz	No
Specialty				
CW split crystal pencil transducer	Cardiac, Vascular		2 MHz	
CW split crystal pencil transducer	Cardiac, Vascular		6 MHz	

Note:

[†]Frequency range: highest/lowest selectable operating frequency on console.

^{**}ML6-15 and S4-10-D can be operated on LOGIQ S7 Expert console only.

[†]The LOGIQ S7 described in this material has not been cleared by the U.S. FDA and is not available for promotion or sale in the United States.

www.gehealthcare.com

©2012 General Electric Company – All rights reserved.

General Electric Company reserves the right to make changes in specifications and features shown herein, or discontinue the product described at any time without notice or obligation. Contact your GE Representative for the most current information.

GE and GE Monogram are trademarks of General Electric Company.

*Trademark of General Electric Company

GE Medical Systems Ultrasound & Primary Care Diagnostics, a General Electric company, doing business as GE Healthcare.

DOC1134689_v8-09.12-EN-Asia Pacific Printed in China September 2012



GE imagination at work